

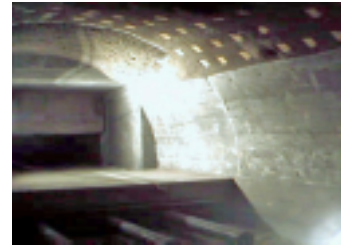
# Application Guide

## DUAL CHAMBER WASTE INCINERATOR



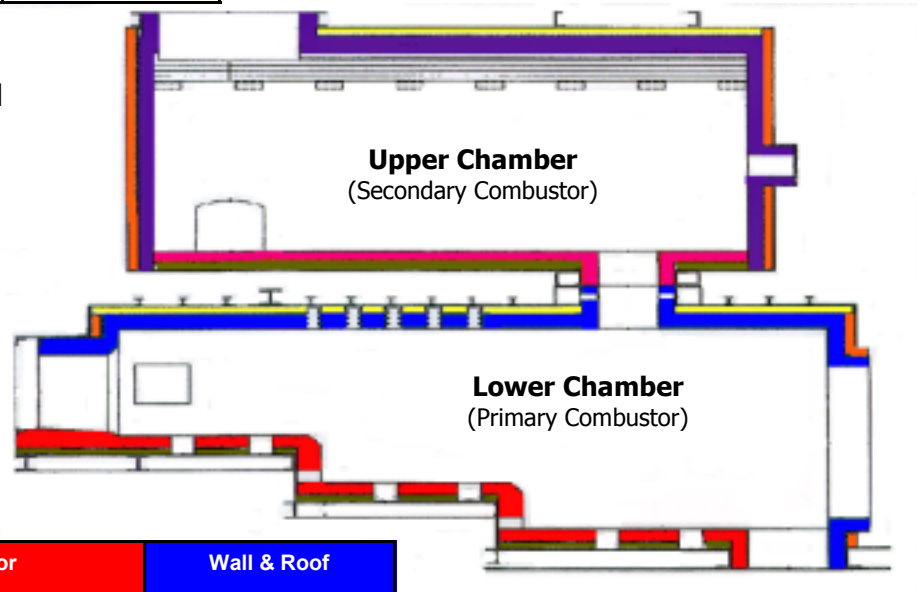
### Upper Chamber

	Floor	Wall & Roof
<b>Normal Service</b>	Plicast HyMOR 3000 Plicast Si-BOND SD Plibrico 60 AB	Plibrico 60 AB Plibrico 68 SA Pligun 70
<b>Severe Service</b>	Plicast HyMOR 3100 Plicast Super HyMOR 65 Plicast Si-BOND M	Plibrico 80 AB Plibrico 85 S Special



### Typical Bio-Hazard Waste Incinerator Configuration

Insulation
Plisulate 1900 Plicast LWI 24 Pligun LWI 106 Pligun LWI 24



### Lower Chamber

	Floor	Wall & Roof
<b>Normal Service</b>	Plicast HyMOR 3000 Plicast Si-BOND SD	Plibrico 60 AB Plibrico 68 SA Pligun 70
<b>Severe Service</b>	Plicast HyMOR 3100 Plicast Super HyMOR 65 Plicast Si-BOND M	Plibrico 80 AB Plibrico 85 S Special Pligun HyMOR 8



**F.S. Sperry Co., Inc.**  
1907 Vanderhorn Drive  
Memphis, TN. 38134

Tel: 901-373-9000  
Fax: 901-385-3272

[www.fssperry.com](http://www.fssperry.com)

This application guide is intended for general information only. Please consult Plibrico Company or your local Plibrico Representative for specific application assistance and product recommendations.