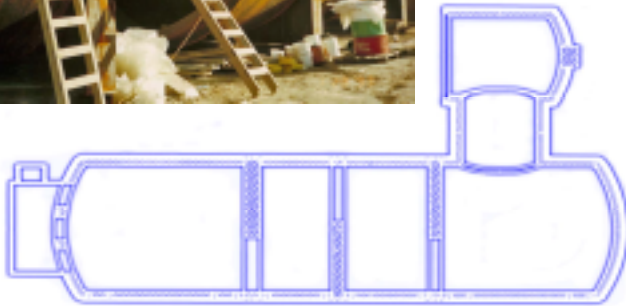




# Application Guide

## SULFUR RECOVERY UNIT

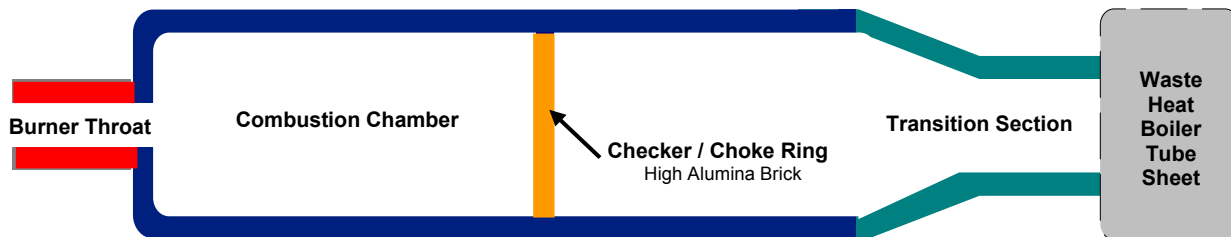


### Transition Section

*Hot Face*  
**PliShot HyMOR 3100 Special**  
**Plibrico HyRATE 60 AB**  
**Plibrico HyRATE 68 S**  
**Pligun HyMOR 8**  
*Back Up Insulation*  
**Pligun LWI 24**  
**Pligun LWI 26**

### Boiler Tube Sheet

**Plicast 40**  
**Pligun 40**  
**Plibrico SR 90**

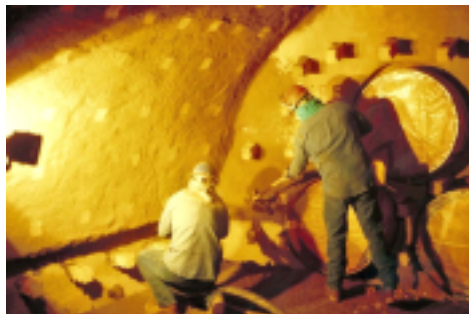
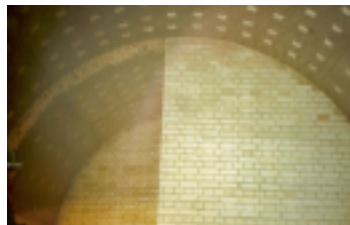


### Burner Throat

**Plicast HyMOR 3100**  
**Plicast Super HyMOR 80**  
**Plibrico 80 AB**  
**Plibrico 85 S Special**  
**Pligun HyMOR 8**

### Combustion Chamber

*Hot Face*  
**PliShot HyMOR 3100 Special**  
**Plibrico HyRATE 60 AB**  
**Plibrico HyRATE 68 S**  
**Pligun HyMOR 8**  
*Back Up Insulation*  
**Pligun LWI 24**  
**Pligun LWI 26**



**F.S. Sperry Co., Inc.**  
 1907 Vanderhorn Drive  
 Memphis, TN. 38134

Tel: 901-373-9000  
 Fax: 901-385-3272

[www.fssperry.com](http://www.fssperry.com)

This application guide is intended for general information only. Please consult Plibrico Company or your local Plibrico Representative for specific application assistance and product recommendations.